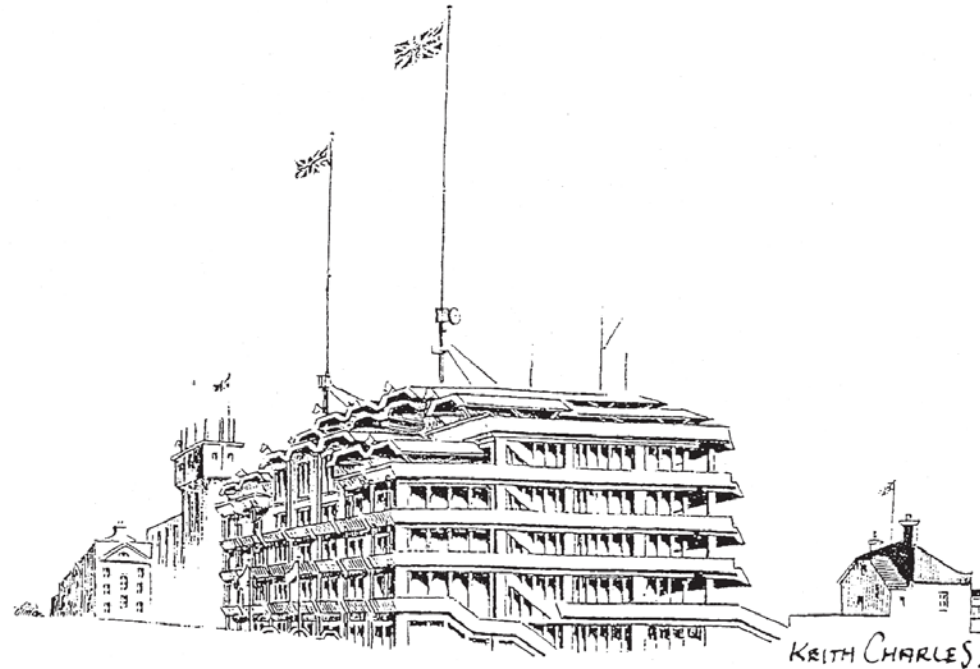


WOODCOTE (EPSOM) RESIDENTS' SOCIETY
Representing the whole of Woodcote Ward

AUTUMN 2008 NEWSLETTER



Social Evening and Talk by Local Historian
Thursday, 23 October
See inside for details

Visit our website on:
www.epsom-ewell.co.uk/wood.php



Committee for 2008/09

<i>Officers</i>	<i>Address</i>	<i>Tel</i>	<i>Email</i>
Chairman			
Rob Blackwell	113 Grosvenor Road, KT18 6JF	274995	robert.blackwell@talk21.com
Hon Secretary			
Kathy Belcher	4 Whitehorse Drive, KT18 7LY	728534	jbka@onetel.com
Hon Treasurer			
Peter Goss	8 Cedar Hill, KT18 7BP	723877	Gosshome@talktalk.net
Committee Members			
Linda Boddy	3 The Hayes, KT18 6HB	279699	lindaboddy@rocketmail.com
Saskia Jordan	5 Barons Hurst, KT18 7DU	726666	saskia@saskia@jordanmail.com
Brian Saxby	59 Sunnybank, KT18 7DY	725915	BJLSaxby@yahoo.co.uk
Tracey Whittington	10 Dudley Grove, KT18 7NB	725522	kaw1@talk21.com
President - Margaret de Lyon			
Margaret de Lyon	15 Dorking Road, KT18 7JR		
Hon Auditor			
C J Bevis FCA	19 Wilmerhatch Lane, KT18 7EQ		
Our Woodcote Ward RA Borough Councillors			
Teresa Cass	1 Headley Parade, Langley Vale Rd, KT18 6AW	270495	tcass@epsom-ewell.gov.uk
Mike Richardson	23 Hambledon Hill, KT18 7BZ	745784	mrichardson@epsom-ewell.gov.uk
Our RA Surrey County Councillor			
Chris Frost	Oak View, 8 Warren Hill, KT18 7BX	720430	c.frost@surreycc.gov.uk



Teresa Cass
RA Borough Councillor



Mike Richardson
RA Borough Councillor



Chris Frost
RA Surrey County Councillor

Message to potential advertisers - reach local customers in an efficient & cost effective manner

If you would like to advertise in our newsletter, please contact Rob Blackwell on Epsom 274995. This newsletter usually goes out three times a year to over 1,500 households in the ward.

Message to residents - please do mention this newsletter when using the goods or services of the companies that support our Society

Please note that, whilst the support of our advertisers is much appreciated, the Society cannot endorse any of the goods or services advertised herein.

Chairman's Introduction

The WeRS Committee and our RA Councillors have been very busy since our last newsletter dealing with the many different issues including planning applications within our ward. The downgrading of Epsom Hospital is still an on-going issue and an application for a two day concert on Epsom Downs the weekend following the Derby also hit the headlines. A public meeting was held at the Queen's Stand on Wednesday 16th July to discuss the proposed concerts. The concert is expected to attract 30,000 people on each day.

A Full Council Meeting held on Friday September 12th gave their consent for the Concerts to go ahead. As plans for policing such a large event are made

known and any other details become public we will let you know.

We look forward to seeing you all at our forthcoming talk and social evening 'Chalk Lane - History on our doorstep' on Thursday 23rd October, 7.30pm at St Martin's Infant School. Please see our insert and phone Linda Boddy if you wish to attend.

The society is here to serve the residents of Woodcote Ward, so if you have any questions or comments please, feel free to contact me, our Councillors, Teresa Cass, Mike Richardson, Chris Frost or anyone on our committee.

Rob Blackwell
Chairman. W(e)RS

New Committee Members Wanted

In order to continue looking after all residents' interests we need an active committee. A couple of longstanding committee members stood down this year so we would welcome three or four new people to join us in order to share the work. When the Residents' Society write to an organisation representing your views, its comments are taken very seriously as it speaks for so many local people. With a full committee, it does not need to be that time consuming and committee members can always choose how much they do. Please don't wait for someone else to volunteer - find out more by speaking to any of the committee members or contact Rob or Kathy for a committee nomination form.

Two Day Concert on the Downs

Our two Councillors Mike Richardson and Teresa Cass are both members of The Epsom & Walton Downs Conservators, the body responsible for looking after The Downs and the interests of all of its users. At the end of June 2008 the Conservators were made aware of full proposals for a two day concert to take place on the Downs at the end of June next year. A pop concert on the Saturday would be followed by a classical concert on the Sunday taking place on the weekend after the Derby Festival. Teresa made it clear to the other Conservators that as she and Mike were acting as both Conservators and as Woodcote Ward Councillors it was essential that resident's views were sought before any final decisions were made.

For this purpose Teresa organised a Public meeting which was held in the Queen's Stand in July. The meeting was well attended following a comprehensive distribution of 3400 leaflets through our own Summer Newsletter and leafleting by Resident Associations in College Ward and Tattenham Corner. Taking on board the views expressed at the public meeting, from letters received from residents, from our own Resident's Association and other RA's, the Conservators requested that more detailed attention was given to several specific issues before any decision could be made. Teresa also formally requested that the vote should be delayed until September to allow extra time for residents to respond.

Following a three hour debate by The Conservators there was a majority vote in favour of allowing the Concerts to take place. Sadly Teresa was unable to vote. Members of the Conservators are not

required to declare any interest in any matter being discussed and Councillor Cass did not believe she had a prejudicial interest. However on the morning of the meeting she received an email from an opposition councillor challenging this view and sadly made the decision not to vote in light of this.

The Conservators stipulated twelve conditions which were attached to the agreement. These were designed to ensure that the actions promised for the benefit of residents and the Conservators, as custodians of the Downs, are kept. The main conditions in brief cover the following points:

- Traffic Plan to control parking in the local areas
- Complete reinstatement of any damage caused to any part of the Downs
- The permission given is for 1-day-pop, 1-day-classical.
- All Public Rights of Way across the Downs to remain open, and arrangements for temporary diversions to be made where necessary.
- Noise criteria.
- Anti social and alcohol related issues.

As a further safeguard permission was granted for one year only to enable a comprehensive review to be considered before taking a decision about concerts in future years.

The Conservators decision was subsequently endorsed by an overwhelming majority at a full meeting of the Borough Council.

News from Surrey County Council

More money for road resurfacing

We have been allocated just over £200,000 to carry out some more road resurfacing in the Borough. One of the roads that should benefit, sometime in the remainder of this financial year, is Avenue Road, where the top surface has worn away to the underlying concrete.

Epsom and St Helier University Hospitals NHS Trust

The Trust has launched a comprehensive review to look at the way it should be configured in the future. The review, which is called Local Needs, Local Health, will look at all possible options for the future shape of the trust. The main reasons for undertaking the review, which will involve the trust's doctors, nurses and other staff are:

- To see if there is a better way for the trust to meet the health needs of Sutton, Merton, Epsom and the surrounding areas;
- To see if there is a better way for the trust meet the demands placed on it by the primary care trusts that commission its services, in particular
 - for patients to be able to access services locally
 - to meet the increasingly high standards of care expected by a number of professional bodies, for instance within A&E, women and children's services, anaesthetics and critical care
 - its ability to deliver services within the resources available.
- To see if there is a better way for the

trust to meet the need to reduce the number of hours staff can work under the European Working Time Directive, its ability to recruit certain types of clinicians and to give patients a choice of where they receive treatment.

Poor review results for Children's Services

The results of a review into how the County Council, together with other public agencies such as the NHS and Police, deal with services for children were published in late July. The report highlighted some areas where the county council was performing well, but raised serious concerns about others, such as protecting at-risk children and provision for youngsters with disabilities. Despite the arrangements for Members to scrutinize the service, problems were not identified. The Chairman of the Select Committee involved claimed that they has not been given an accurate picture of the state of the Children's Service by Officers. A recovery plan has been produced, and remedial actions already started. This includes the departure of three senior managers from the Council's employment.

South-East Plan – Government changes

The Government has made some changes to the South East Plan, despite the Plan being examined in detail by one of its own Inspectors. The bad news is that the Government has increased the

amount of new houses that must be built by another 22,500. The original Plan suggested 578,000 by 2026, and the Government's Inspector increased this to 640,000. The areas in Surrey that will be most affected are Elmbridge, and Reigate & Banstead, which faces an increase of 45% over the initial proposals. The second piece of bad news is that the Government is going to review Green Belt boundaries to the north-east of Guildford, the Reigate/Redhill area and possibly the south of Woking. While not directly affecting our Borough, the precedent it sets is worrying.

Higher energy costs hitting the County Council

It is not just consumers who are feeling the effects of higher energy prices. Increases in electricity charges will cost the County Council an extra £860,000 for buildings and £830,000 for streetlights next year. It is estimated that schools will be charged an extra £1.4m, and the Fire Service will be spending £250,000 for fuel. The Leader of the Council has written to the Prime Minister about this, asking for recognition of these extra costs in next year's grant settlement.

More joint working on recycling

The County Council's Executive has agreed to endorse officially a working arrangement with the county's 11 district and borough authorities to ensure residents get the best waste services available. The Executive signed a 'memorandum of understanding' which, while not legally binding, sets out in

simple terms the ways the county council and the 11 other authorities will work on increasing recycling and dealing with waste related issues.

Food waste collections to be expanded

The County Council has decided to trial additional recycling collection services specifically for food waste across Epsom & Ewell, Guildford and Surrey Heath. The implementation of food waste collections across the three boroughs follows on from a successful trial scheme in parts of Guildford, Elmbridge and Mole Valley, which has been in place since 2007. A recent analysis of the composition of Surrey's waste going into landfill revealed an astonishing 40%, about 100,000 tonnes, was household waste that is not separated out or sent for reprocessing. The County Council's Executive has agreed to give financial support to the three boroughs to offer residents a food waste collection, which will give even more choice when it comes to recycling. Based on information from the trials, it is estimated at least 36,000 tonnes of food waste would be diverted from landfill by segregated collections countywide. This would not only be environmentally beneficial, it would also reduce the burden of landfill disposal costs on the Surrey taxpayer. The county council's recycling target of 60% will only be achieved if organic waste is diverted from residual waste. If this initiative is rolled out across the all 11 boroughs and districts it is expected to contribute to an 8.5% increase in the overall recycling rate for Surrey.

New drain covers to be used following spate of thefts

The County Council is to investigate installing a new type of drain cover to combat a recent rise in thefts after spending more than £53,000 replacing stolen ones in less than four months. The county council is looking at a hinged drain cover, which will be attached to the base and therefore harder to remove. The design will not completely stop a determined thief but will make taking the covers much harder and could completely prevent some of the more opportunistic thefts around the county. The cost of repair work is around £200 each time, as the frame has to be replaced

as well as the grilled cover. The scrap metal value they are sold on for is much lower than this.

School Governor vacancy

One of the duties of a County Councillor is to appoint some school Governors. Currently there is a vacancy at The Vale Primary School, Langley Vale. If anyone is interested please contact me, and I will let you know what is involved. If you are interested in vacancies at other schools I would also like to hear from you.

Cllr Chris Frost

RA Surrey, Epsom & Ewell South East

The Surrey County Council Elections are due to be held next Spring. If you would be interested in applying to be a prospective candidate for this area please contact Kathy Belcher on 01372 728534 by October 25th 2008.

Recycling News

You will know from previous articles in previous newsletters and from information in the summer edition of Borough Insight that from next year there are plans to increase recycling by collecting food waste, cardboard and plastic bottles. This will increase our recycling rate from 30% to c50%. The plans are well advanced and include future publicity explaining the service and a series of Roadshows located in areas where residents are likely to visit, namely schools, shopping areas or community centres such as the



Ebbisham Centre.

As a reminder the plans are to collect paper, glass, cans, textiles and garden waste as now but to introduce a weekly collection of food waste and a fortnightly collection of plastic bottles & cardboard alternating with the, by now much reduced and inert, residual waste.

Why are we doing this?

Quite simply for both environmental and cost reasons.

In environmental terms rotting food and garden waste in landfill sites generates

around a quarter of the UK's methane emissions. Methane is a particularly potent greenhouse gas contributing to Global Warming having over twenty times the impact of carbon dioxide.

In cost terms it costs £24 per tonne in Landfill Tax to dispose of rubbish in the ground. Last year this cost the Borough £475,000 and by 2010 this is set to double. In addition, further EU fines could reach £150 per tonne if waste disposal targets are not met. Therefore, there is a real cost to the council taxpayer if we do not recycle more.

Against this for each tonne of waste which is not sent to landfill (i.e. recycled) we receive a grant from the Government and we can also sell the material we collect. Last year this contributed around £400,000 towards the Borough's income. Therefore, there is a real incentive to

recycling.

We have always maintained that the aim is to provide a recycling service which ranks highly against all three national indicators – a high recycling rate, cost effectiveness and customer satisfaction.

Therefore in summary:-

- We will continue to increase our recycling rate.
- We are introducing the new recycling regime at no additional cost to the council taxpayer.
- Preliminary results from the Citizens Panel poll and the "Insight" questionnaire indicate a positive response.

***Cllr. Mike Richardson
RA Woodcote Ward***

Nescot Students Lay Foundations for Langley Vale Heritage

Neglect, fallen trees and ivy have severely damaged the Grade Two Listed Warren Wall in Langley Vale and left the Officers and Councillors from Epsom and Ewell Borough Council overwhelmed by the magnitude of this Conservation Project. However, the historical importance of The Wall is such that Epsom and Ewell Borough Conservation Officer Anthony Evans, in partnership with the Lower Mole Countryside Project, the Jockey Club and the Epsom & Walton Downs keepers have come together to formalise a plan to rescue the Wall.

carrying out further work this Autumn. The clearing of the trees revealed the huge job in hand. Much of the red brick wall was either damaged or simply missing altogether. There are very little available funds for work of this kind and so the Project Management Team was faced with the task of looking for volunteers, skilled in bricklaying. They approached Nescot and in spring 2008, bricklaying students from Nescot embarked upon a careful approach to restoring the wall. Salvaging broken bricks, and excavating the base of the wall the hope is that much of this stretch will eventually be revealed. The

bricks which might be used for re-building are being carefully removed and stored, while many more are beyond re-use.

A firm decision about what will happen to the wall when all the recovery work has finished has not been agreed, but it could be

that the wall will be 'stabilised' at a lower level (600mm above ground level) along most of its length, with perhaps one or two higher stretches repaired. Salvaged or second hand bricks and lime



Their initial job was to fell a number of trees that were either damaging the wall or lying across it. This was carried out by volunteers from the Lower Mole Countryside Project who will be

mortar will have to be used to give it an authentic appearance.

The Warren Wall was created in 1720 by Charles, 5th Lord Baltimore who lived in nearby Woodcote Park and was a friend of Frederick the Prince of Wales, who lived at The Durdans. The two men were both interested in field sports, including hunting, hawking and hare coursing. The unenclosed Downs next to their estates formed a convenient place for exercise and gave Baltimore and his visitors a chance to discuss confidential politics in the open air. The Warren Wall was built as an enclosure for hares with the keeper's cottage in the line of the wall on the East still visible. The wall was fitted with a series of little hatches or trapdoors which opened onto the Downs. When Lord Baltimore wanted to go coursing one of the hatches would be opened and a hare would be driven out. The hunt servants, or slippers, would each be standing with a pair of greyhounds on a leash and as soon as the hare had made an 80 yard start, they would slip the dogs and let them run after the game. The gentlemen would follow on horseback, and an umpire would

award points for each dog for speed and ability. After the first course, the dogs with the highest score were selected, everyone returned to the Warren and another hare was let out of the hatches, until at last one dog was acknowledged the winner!

The Hare Warren continued in use through to 1843 where a Tithe Map still described the enclosure as a Hare Warren, but by then the Warrener's house was being used for the horse races and the Warren itself was used as a saddling enclosure. Since 1843 the importance of horse racing on the Downs has led to a decline in the sport of hare coursing.

The Warren on Epsom Downs is one of the few examples of a Hare Warren to exist in England and it's preservation is of interest to us all. If you are interested in volunteering or talking further about this project please ring:

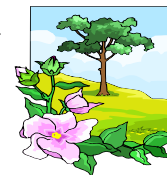
Anthony Evans, EEBC
Conservation Officer on 01372
732394

Linda Boddy
(Woodcote Resident's Society)

Countryside Matters

Countryside Matters

One of the benefits of living where we do is the easy access to the wealth of wonderful countryside all around us and this October marks the 25th anniversary of countryside management in Surrey.



Twenty five years ago the Lower Mole Countryside Management Project was the first of its kind and started as collaboration between Surrey County Council, other local authorities and the Countryside Commission who wanted to bring in the then comparatively new idea of urban-fringe countryside management.

I am proud to have been associated with the Project for a number of years now, firstly when working with Surrey County Council and latterly as Epsom and Ewell council's representative on the steering committee. Also, and quite independently, I chair the associated Lower Mole Countryside Trust.

But why manage the countryside?

Put simply none of us would be enjoying the recreational benefits of the countryside around us without its active management. Wildlife and nature conservation would suffer. Access would be difficult, woods and hedgerows overgrown and ponds neglected.

The original brief was to bring about small scale improvements to benefit the landscape, improve informal access and to ensure that agriculture was able to continue as a legitimate urban-fringe activity (after all it is predominantly

farming practices that have given us the landscape that we take for granted). However, the Lower Mole area is very distinctive and agriculture is not the major land use, but common land and open space is highly significant, and the Project evolved rapidly to respond to a different set of needs.

Today the Lower Mole Project covers an area of 143km² within the boroughs of Epsom, Elmbridge together with parts of Mole Valley and Kingston and carries out work for the benefit of wildlife and the local community. The aim of the project is to:-

- Improve public access to the countryside for informal recreation
- Conserve wildlife habitats and characteristic landscapes.
- Increase public knowledge and understanding of the countryside
- Encourage greater community involvement in the countryside

There is a small core of staff based in Horton Country Park and ably assisted by a small group of dedicated volunteers. Their work includes woodland management, erection of stiles and signposts on footpaths, surfacing muddy bridleways, restoring ponds and clearing scrub to restore heathland and downland. They also lead guided walks, give advice and grants on conservation projects and produce leaflets and information boards for self-guided walks.

Major successes of the Lower Mole Project include:

- Carrying out the first major heathland restoration task in Surrey which led to the production of the Surrey Heathland Strategy, the first for any county in England, which acted as the blueprint for restoration work elsewhere.
- Facilitating the return of traditional coppice working to ensure sustainable woodland management.
- Facilitating the return of traditional cattle grazing to several sites, including Epsom Common.
- Acting as a model for other local countryside projects, leading to the establishment of the Downlands Project, the Surrey Heathland Project and the Gatwick

Greenspace Project (formerly Horley Crawley Project).

Five years ago the Lower Mole Countryside Trust, a registered charity, was established to support the work of the Project and local community groups. It is involved with charcoal production and sales, gathering seeds to provide a source of tree seedlings for local schools, skills training and assisting in bids to other funding organisations. The Trust has also committed percentage grants in partnership with other organisations to allow larger scale schemes to proceed.

If you enjoy the countryside, would like to see and learn more, join a guided walk or participate in a practical way (supervision and training given) then call the Project on:- 01372 743783

Cllr Mike Richardson, RA Woodcote Ward

Planning Applications

The Society chose to comment on the following recent Planning Applications affecting our Ward:

The Durdans & Lavandou Stables – Chalk Lane – & Jodie’s Yard **Planning Committee Date to be confirmed.**

Epsom will lose approx. 55 stables to offices within the Listed Grade II Riding School and housing with 50 car-parking spaces in a Conservation Area. The Society notified residents of the public display of the proposed application drawings in the Town Hall.

The Society collected signatures to its petition to retain Epsom’s Horse-racing heritage and its stables from commercial

development as detailed in the policies within the Epsom & Ewell Local Plan.

Jodie’s Yard

The expansion of Jodie’s Yard to provide residential accommodation with six additional stables is an application by Lord Halifax to develop residential properties on green belt land. No additional stables to be built if residential accommodation refused.

Hill End, Woodcote Side : Demolition of existing building and erection of 14 flats

The Council refused the application by reason that its scale and massing would be out of character with the area. Residents from Woodcote Park Road, Hylands Road, Woodcote Close, Woodcote Side and Wilmerhatch Lane produced a strong petition

against the development

Chalk Lane Hotel : Erection of 14 bedroom extension to hotel.

The Council refused the application by reason that the proposed development would lead to the parking of cars within the frontage area of the listed building which would significantly detract from the visual appearance of the building and its setting, contrary to Policy CS5 of the Epsom & Ewell Core Strategy Plan 2007.

AN APPEAL HAS BEEN MADE TO THE SECRETARY OF STATE.

Land @ Hylands Mews, Dorking Road: Erection of 2-bedroom, 2-storey detached property.

Council refused this application on substantive grounds; cramped form and design will overdevelop the site; unacceptable impact on neighbouring properties in terms of overshadowing, overbearing and sense of enclosure; the proposed garden will be severely overlooked and the proposed development would adversely effect the pedestrian environment due to the permanent removal of the pavement. All reasons supported within the Epsom & Ewell Core Strategy Plan.

Rosebery School, White Horse Drive: Approval of reserved matters pursuant to outline permission for Erection of 44 flats and 14 houses.

The Society was gratified that its comments on the application were upheld by the Council (i) the submitted drawings of the site landscaping screened the Turkey Oak from view from the public footpath; (v)equally the cycle store and refuse store would be an eyesaw for the users of the public footpath. The application was granted by the Council subject to the following conditions:

- i) Detailed drawings be submitted for

approval of the Borough Council of a landscaping scheme for the planting of trees and shrubs and showing areas to be grass seeded or turfed. The details of the landscaping shall allow for views of the turkey oak and the open space around it from the adjoining public footpath and through the gap between the blocks of flats C and E. The Council wished to ensure the provision and maintenance of landscaping in the interests of visual amenity as required under the policies of the Epsom and Ewell Local Plan (May 2000).

- ii) The siting of the cycle store to the south of Block G and the refuse store to the south of Block E were not approved. These structures shall be sited in accordance with details to be submitted to and approved by the Local Planning Authority to safeguard the visual amenities of the locality under the Local Plan 2000).
- iii) Changes to existing ground levels and any retaining walls along the edge of the access road within 20m of the trunk of the preserved Turkey Oak shall be submitted to and approved in writing by the Council.
- iv) Prior to occupation a continuous 1.8m high security fence will be erected on the site boundary with Meadow Court.
- iv) Samples of materials to be used for external surfaces of the development shall be approved in writing by the Council.
- v) The siting of the cycle store to the south of Block G and the refuse store to the south of Block E were not approved. These structures shall be sited in accordance with details to be submitted to and approved by the Local Planning Authority to safeguard the visual amenities of the locality under the Local Plan 2000).

Community Noticeboard

Epsom Mental Health Week

5th - 12th October 2008

Dance, Film, Drama, Music, Talks, Comedy and more.
Exploring mental illness in Epsom past, present and future.

Tel: 01372 721518

Web: www.epsommentalhealthweek.org.uk

Epsom Town Centre Area Action Plan Consultation - Saturday 11th October 10am - 3pm Epsom Market Place

As part of the Local Development Framework the Council is producing an Area Action Plan (AAP) for Epsom Town Centre. The Area Action Plan will be a long term strategy for the town centre and will provide a framework for future change up to 2026. It is therefore important that the document is developed in partnership with input from the local community.

Council Officers will be on hand on Saturday 11th October between 10 am and 3pm in Epsom Market Place to receive comments and discuss any issues relating to the town centre. This is a great opportunity to influence the future planning of the town centre.

Woodcote Ward - Featured Club

Epsom Garden Society and Epsom Garden Flower Club



The Epsom Garden Society is a lively group offering members a varied programme of activities including:

- three shows a year in Spring, Summer and Autumn,
- a programme of meetings held monthly which include talks from guest speakers. These are held at St. Barnabus Church Hall starting at 8.00pm. However, in the summer months, meetings are substituted by a series of garden visits.
- an Open Gardens Group
- a Society newsletter published 10 times a year

New members are always welcome. For further information please contact:
Doreen Tilbury on 01372 721289.

Flower Arranging

For those interested in flower arranging, the Epsom Garden Flower Club usually meets monthly, on the first Thursday in the month at Christ Church Hall, Christchurch Road.

- Doors open at 7.15pm and the meeting begins at 8pm. The meetings are normally a demonstration by a local NAFAS demonstrator and members have the opportunity to win one of the many excellent arrangements produced during the evening.
- The annual programme also includes a garden visit and a workshop so if you are interested in flower arranging please come along, new members are always welcome.

For further information please contact:
Elizabeth Toogood on 01372 721353.

We are delighted that Woodcote Ward has such a thriving community of clubs. If you would like us to feature your club in our next newsletter please send details to me at:
lindaboddy@rocketmail.com or telephone 01372 279699

Diary of Events

Saturday 11 th October 10am – 3pm	Town Centre Area Action Plan Consultation Epsom Market Place
Saturday 18 th October 10am – 3pm	Recycling Roadshow The Vale Primary School Car Park Langley Vale
Thursday 23 rd October 7.30 pm	Chalk Lane – History on your Doorstep Talk by Ian West at St Martin's Infant School
Thursday 6 th November 7.30 pm	Showing of the film 'How Cuba Survived Peak Oil' Epsom Town Hall

WATCH OUT FOR OUR NEXT NEWSLETTER

If you would like your community or club event mentioned in our forthcoming newsletter next Spring please email to lindaboddy@rocketmail.com or telephone 01372 279699